

RANGE DEVELOPED, RANGE READY, COWBOY TYPE BULLS

FLYING E

Angus Ranch

BULL SALE

Friday 1:00 PM CST

MARCH 12th

2021

Winner Livestock Auction • Winner, SD

SELLING 25 TWO YEAR OLD ANGUS BULLS



FLYING E

Angus Ranch

Contact us to request a catalog

RYAN EDWARDS

605.452.3383

White River, SD 57579

rdeflyinge@hotmail.com

www.flyingeangusranch.com

Featured Sires:

MILL BAR HICKOK 7242

PAY RAISE 4886

SAV RESOURCE 1141

S CHISM 255

Dan Clark Auctioneer

1-605-842-6075

RANGE DEVELOPED, RANGE READY, COWBOY TYPE BULLS

FLYING E

Angus Ranch

BULL SALE

75 Day Feed Test

After weaning, the bulls are put on a 75 day feed test with a target of gaining 2.75 lbs per day.

The idea behind the feed test isn't to see how fast he'll grow and how fat we can get him, but to make sure he can convert the feed he's given into the pounds he's supposed to gain. Any bull that gained less than 2.5 lbs per day, is cut.

We feel that pushing the bulls for the sake of big numbers to print in the catalog only looks good on paper. It does nothing to add to soundness, fertility or longevity.

Keep in mind, while a 3lb ADG does not look impressive in some bull catalogs, he was only supposed to gain 2.75 lbs with what he was given.

SELLING 25 TWO YEAR OLD ANGUS BULLS

SALE DAY PHONES:

605-842-0451

Winner Livestock 1-605-842-0451

Ryan Edwards 1-605-840-8480

Dan Clark 1-605-842 6075

Internet bidding will be available on cattle USA. Anyone interested in bidding by internet will need to call the Winner Sale Barn and set up an account with Frank Volmer. The phone number is 1-800-201-0451.

RYAN EDWARDS, 605.452.3383

25331 Yellow Eagle Rd - White River, SD 57579

rdeflyinge@hotmail.com

GENERAL INFORMATION

SALE LOCATION:

Winner Livestock Auction, 31690 Livestock Barn Rd, Winner SD

MOTEL ACCOMMODATIONS

Holiday Inn Express 1-605-842-2255

Super 8 1-605-842-0991

HEALTH

All bulls tested negative for Trich and BVD. A breeding soundness exam and semen test will be performed prior to the sale, by the Winner Animal Clinic of Winner, SD. The bulls have been vaccinated with 2 rounds of Virashield 5 and 2 rounds of footrot vaccine. All paperwork will be made available on sale day. Interstate health papers will also be provided.

Breeding Guarantee

All bulls selling for \$2,000 or above will be guaranteed against injury or disposition problems during the first breeding season. The breeding season will be defined as 90 days after you turn him out with your cows. If your bull gets hurt, take him to the vet, get him looked over and have the injury verified. Take him to the salebarn and sell him. The salvage value is yours to keep. Salvage value will be set at a minimum of \$1,000 dollars. Call me and I will send you a check for the balance or a credit in next years sale, which ever option you prefer. If you need a bull to finish out your breeding season I will provide you with one. You will need to come get him and bring him back at the end of the breeding season. Any bulls selling for under \$2,000 will have no guarantee. The salvage value is yours to keep. I do not guarantee the bulls against death.

Terms & Conditions

All cattle sell according to the standard terms and conditions of the American Angus Association.

Trucking

If you buy 3 or more bulls I will bring them back home and keep them free of charge until June 1st or your turn out date if you so desire.

If you buy less than 3 bulls I will bring them back home at a cost of \$1.50 per head per day until June 1st or your turn out day.

Please consider taking the bulls home on saleday. There are 20 miles of mud/gravel roads between my place and the hi-way. It's not easy traveling in the springtime, besides they've been here for two years and they don't like me anymore.

Liability

All persons attending this sale do so at their own risk, legal or otherwise for their safety or the behavior of the animals. The owners, auction service, and sale staff assume no liability for property loss for any accidents that may occur.

Announcements

Announcements from the block will take precedence over the catalog. Buyers unable to attend may send their bids to the Auction Service, Field Reps, or Auctioneer.

Welcome to the Ninth Annual Flying E Angus Ranch Bull Sale

There are around 5 good heifer bulls in the sale offering this year. Most of the genetics in the sale have a maternal slant to them, so if your building or breeding replacement females you should be able to find something you like.

The bulls in the sale offering are all coming two year olds. We feel that calving the cows in April & May and keeping the bulls until they are two is advantageous for us, but more importantly leaves a better bull when it is all said and done.

These bulls have been handled and developed slowly with pasture and patience. We've all bought yearling bulls that have been overfed and overdeveloped and had them fall apart over the course of the breeding season. We feel these two year olds are a more sound investment. These bulls haven't had feed pushed on them. They were weaned and fed a ration designed for a gain of 2.75 lbs/day. If they didn't make at least 2.5 lbs/day we cut them..

We believe the bulls in this sale have a balanced EPD profile, the genetics to make efficient mother cows, as well as leave you with a good set of steers.

These are all virgin bulls. The bulls will all have a breeding soundness exam, BVD, and Trich test prior to sale day. All the bulls are registerable and we will transfer the papers to you at no charge if you want them.

Thank you and we hope see you on sale day.

Ryan Edwards

Lots 22, 23, 24, & 25 are all 3/4 brothers out of Final Answer daughters. They are all heifer bulls. If you have a bred heifer project at home, here is a set of bulls that would make a uniform set of calves.

All bulls selling for over \$2000 will be guaranteed. We've sold over 360 bulls since 2013. We've paid out 14 warranties, that's less than 5%. He's not going to fall apart.



Amanda & Dale

S A V RESOURCE 1441



S A V RESOURCE 1441

AMF-CAF-D2F-DDF-M1F-NHF-OHF-OSF

Born: 01/07/2011

#17016597

Tattoo: 1441

Bull

R R Rito 707
Rito 707 of Ideal 3407 7075
#13066860 Ideal 3407 of 1418 076

Rito N Bar
Eriskay of Rollin Rock 3
Ideal 1418 of 8103 4286
Ideal 076 of 692 8375
Sitz Traveler 8180
Boyd Forever Lady 8003
S A F 598 Bando 5175
S A V May 7238

S A V 8180 Traveler 004

S A V Blackcap May 4136
#14739095 S A V May 2397

PRODUCTION EPDs				MATERNAL EPDs			\$ VALUE			
CED	BW	WW	YW	CEM	Milk	\$EN	\$W	\$F	\$G	\$B
0	+4.2	+70	+133	-2	+18	-8.14	+51.36	+85.20	+8.01	+119.43
CARCASS	CW			MARB			REA		FAT	
	+55	.53			+06	.48		+1.02	.49	

Lot 1 RESOURCE

Final Answer 0035
FEAR FINAL ANSWER 301
FEAR Thunder Russ 05

Sitz Traveler 8180
SAV Emulous 8145
Connealy Thunder
OCC 5193 All Russ

PRODUCTION EPDs				MATERNAL EPDs			\$ VALUE			
CED	BW	WW	YW	CEM	Milk	\$M	\$W	\$B	\$C	
6	2	65	119	5	20	62	62	113	216	
PERFORM	ACT. BW	84	205Wt	795	PELVIC	189	SCROTAL	41	TEST	3.5
CARCASS	CW	47		MARB	0.07	REA	0.75	FAT	0.013	

- Out of a Final Answer & Thunder cow
- #1 for 205 WT, Test, and Scrotal
- #2 Pelvic, WW, & YW
- Highly maternal with plenty of performance as well

Lot 3 RESOURCE

TC ABERDEEN 759
FEAR ABERDEEN LINDA 13
OCC 916 LINDA 033 FF

CRA BEXTOR 872 5205 608
TC BLACKBIRD 4034
IDEAL 6301 OF 4233 2309
OCC 725 BANDO TRAVELER 6807

PRODUCTION EPDs				MATERNAL EPDs			\$ VALUE			
CED	BW	WW	YW	CEM	Milk	\$M	\$W	\$B	\$C	
3	2.4	56	100	2	24	61	47	101	178	
PERFORM	ACT. BW	83	205Wt	745	PELVIC	175	SCROTAL	39	TEST	3.3
CARCASS	CW	39		MARB	0.23	REA	0.72	FAT	0.011	

- Deep bodied, solid built Aberdeen Dam
- #3 Milk, #4 Scrotal
- Good maternal pedigree, Resource, Aberdeen & Ideal
- Full brother sold to Matt Hight in 2018 for \$4,000.00

Lot 5 RESOURCE

BRUIN UPROAR 0070
FEAR UPROAR NET WORTH 600
FEAR NET WORTH RUSS 012

SITZ UPWARD 307R
FALCON BLACKBIRD 6071
SAV NET WORTH 4200
OCC 4157 PRIDE RS

PRODUCTION EPDs				MATERNAL EPDs			\$ VALUE			
CED	BW	WW	YW	CEM	Milk	\$M	\$W	\$B	\$C	
3	3.1	67	124	3	20	54	58	123	237	
PERFORM	ACT. BW	85	205Wt	680	PELVIC	175	SCROTAL	37.5	TEST	2.7
CARCASS	CW	61		MARB	0.21	REA	0.77	FAT	0.016	

- Good looking Uproar/Networth bred Dam
- #1 WW, YW, \$C
- High performance genetic package

Lot 2 RESOURCE

OCC PAXTON
FEAR CHARLO CONSENSUS 69
FEAR CONSENSUS BLACKBIRD 420

OCC FOCUS 813 F
OCC BLACKBIRD 736 K
CONNEALLY CONSENSUS 7229
OCC 550 BLACKBIRD 1407

PRODUCTION EPDs				MATERNAL EPDs			\$ VALUE			
CED	BW	WW	YW	CEM	Milk	\$M	\$W	\$B	\$C	
5	2	60	112	-1	22	54	65	100	185	
PERFORM	ACT. BW	84	205Wt	755	PELVIC	196	SCROTAL	37.5	TEST	3.1
CARCASS	CW	27		MARB	0.13	REA	0.79	FAT	0.03	

- Out of a Easy Keeping Charlo cow
- #1 Pelvic, #2 \$W
- Top 205 WT
- Maternal power & performance

Lot 4 RESOURCE

S CHISM 6175
FEAR CHISM ALLIANCE 39
FEAR BER ALL NEW DSGN 1407

S ALLIANCE 3313
S GLORIA 464
BERBOS ALLIANCE 7152
OCC 551 DUTCHESS 1407

PRODUCTION EPDs				MATERNAL EPDs			\$ VALUE			
CED	BW	WW	YW	CEM	Milk	\$M	\$W	\$B	\$C	
3	2.3	55	97	2	18	55	44	115	188	
PERFORM	ACT. BW	81	205Wt	710	PELVIC	169	SCROTAL	35.5	TEST	2.8
CARCASS	CW	45		MARB	0.27	REA	0.48	FAT	0.026	

- Square hipped, easy fleshing Chisum Dam
- Balanced set of numbers
- Moderate Milk EPD & easy keeping genetics

Lot 6 RESOURCE

CONNEALLY CONSENSUS 7229
FEAR CONSENSUS LEAD ON 515
OCC 771 BARBI LO

KMK ALLIANCE 6595 I87
BLUE LILLY OF CONANGA 16
CONNEALLY LEAD ON
OCC 918 BIG BARBI N

PRODUCTION EPDs				MATERNAL EPDs			\$ VALUE			
CED	BW	WW	YW	CEM	Milk	\$M	\$W	\$B	\$C	
3	3	62	113	2	24	61	61	107	210	
PERFORM	ACT. BW	80	205Wt	695	PELVIC	175	SCROTAL	35.5	TEST	3
CARCASS	CW	47		MARB	0.28	REA	0.87	FAT	0.002	

- Good Consensus bred Dam
- Top 5 WW,YW, & Milk
- Moderate framed cow builder

Lot 7 RESOURCE

TC ABERDEEN 759
FEAR ABERDEEN LEAD ON 10
OCC 577 GEORGIA LO

CRA BEXTOR 872 5205 608
TC BLACKBIRD 4034
CONNEALY LEAD ON
OCC 321 GEORGIA EXT

PRODUCTION EPDs				MATERNAL EPDs			\$ VALUE			
CED	BW	WW	YW	CEM	Milk	\$M	\$W	\$B	\$C	
3	2.5	59	110	3	23	55	53	104	205	
PERFORM	ACT. BW	82	205Wt	690	PELVIC	169	SCROTAL	38.5	TEST	2.9
CARCASS	CW	43	MARB	0.32	REA	0.81	FAT	0.003		

- Aberdeen / Lead On Dam
- #2 REA, #5 Scotral
- Aberdeen & Resource should make for good daughters

Lot 8 RESOURCE

BRUIN UPROAR 0070
FEAR UPROAR LASSIE 616
OCC 4163 PROUD LASSIE CF

SITZ UPWARD 307R
FALCON BLACKBIRD 6071
CONNEALY FRONTLINE 6397
OCC 100 PROUD LASSIE OF 234D

PRODUCTION EPDs				MATERNAL EPDs			\$ VALUE			
CED	BW	WW	YW	CEM	Milk	\$M	\$W	\$B	\$C	
2	3.3	61	112	4	18	54	49	114	237	
PERFORM	ACT. BW	83	205Wt	680	PELVIC	175	SCROTAL	37	TEST	3
CARCASS	CW	48	MARB	0.27	REA	0.67	FAT	0.011		

- A good Uproar Dam
- #2 \$C & CW
- #4 WW

The \$C (Combined Value) is an index value expressed in dollars per head, that blends both maternal and terminal indexes using 14 different traits.

The \$M (Maternal Weaned Calf Value) number is used to determine the maternal value of a bull's offspring. The traits used to calculate the number are as follows: calving ease direct, calving ease maternal, weaning weight, milk, heifer pregnancy, docility, mature cow size, claw set, & foot angle. The number is designed for outfits that keep their own replacement heifers and market the remaining calves as feeder calves. Higher \$M value are more favorable when comparing two animals. That's how the Angus Association explains it. A rancher would explain it as follows: It's a number to use when you want to avoid running a big, horsey, hay burning bitch that can't never get pregnant and raise a decent calf.

GUARANTEE

All bulls selling for \$2000 and above will be fully guaranteed.

Bulls selling for less than \$2000 will have no guarantee.

Please see inside front cover for details.

We've sold over 340 bulls since 2013.

We've paid out 11 warranties in that time.

That's less than 4%.

He's not going to fall apart.



Dale and Eyore doing cowboy stuff

ICC PAY RAISE 4886



Lot 9 PAY RAISE

AAR TEN X 7800 SA
FEAR GAME DAY TEN X 610
FEAR GAME DAY 878 139

MYTTY IN FOCUS
AAR LADY KELTON 5551
GDAR GAME DAY 449
OCC 555 BLACKCAP 878

PRODUCTION EPDs				MATERNAL EPDs			\$ VALUE			
CED	BW	WW	YW	CEM	Milk	\$M	\$W	\$B	\$C	
5	1.4	57	109	9	23	45	61	138	225	
PERFORM	ACT. BW	80	205Wt	780	PELVIC	182	SCROTAL	36	TEST	3.4
CARCASS	CW	41	MARB	0.37	REA	0.44	FAT	0.037		

- Nice uddered Game Day / Ten X bred Dam
- #1 \$B, #2 Feed Test
- #4 Pelvic
- Good performance bull

Lot 11 PAY RAISE

GDAR GAME DAY 449
FEAR AMANDAS GAME DAY 313
OCC 213 MADAM FOCUS

BOYD NEW DAY 8003
GDAR MISS WIX 474
SAF FOCUS OF ER
OCC 036 MADAM OF FRONTLINE

PRODUCTION EPDs				MATERNAL EPDs			\$ VALUE			
CED	BW	WW	YW	CEM	Milk	\$M	\$W	\$B	\$C	
7	0.5	56	81	13	24	56	56	100	191	
PERFORM	ACT. BW	81	205Wt	795	PELVIC	196	SCROTAL	37.5	TEST	3.5
CARCASS	CW	81	MARB	0.26	REA	0.25	FAT	0.025		

- Amanda's Game Day cow did it again
- #1 205 WT, Pelvic, Scrotal, & Feed Test
- #2 WW & YW, #3 Milk
- This bull does a lot of things right, he's a keeper

ICC PAY RAISE 4886

[AMF-CAF-D2F-DDF-M1F-NHF-OHF-OSF]

03/30/2014 #17974692 Tattoo: 4886 Bull

Basin Payweight 107S
Mill Coulee Pay Raise 17468974
Mill Coulee Barbara K 905

Hoover Dam
ICC Blackbird 0739 16816874
M A R Blackbird 8067

Vermilion Payweight J847
Basin Lucy 3829
S A V Final Answer 0035
Mill Coulee Barbara K 41
SydGen C C & 7
Erica of Ellston C124
Sitz Traveler 8180
Jolly R Blackbird 184A

PRODUCTION EPDs				MATERNAL EPDs			\$ VALUE				
CED	BW	WW	YW	CEM	Milk	\$EN	\$W	\$F	\$G	\$B	\$C
+5	+1.7	+62	+120	+11	+20	- 32	+51	+90	+24	+114	+192
CARCASS	CW	+38	.65	MARB	+0.61	.62	REA	+74	.59	FAT	-.025 .62

Lot 10 PAY RAISE

CONNEALY CONSENSUS 7229
FEAR CONSENSUS FRONTLINE 501
OCC 4169 PRIMROSE CF

KMK ALLIANCE 6595 I87
BLUE LILLY OF CONANGA 16
CONNEALY FRONTLINE 6397
OCC 809 BARBARA 033

PRODUCTION EPDs				MATERNAL EPDs			\$ VALUE			
CED	BW	WW	YW	CEM	Milk	\$M	\$W	\$B	\$C	
4	2.3	60	108	8	25	58	60	115	207	
PERFORM	ACT. BW	84	205Wt	780	PELVIC	182	SCROTAL	39	TEST	3.2
CARCASS	CW	41	MARB	0.47	REA	0.45	FAT	0.012		

- Square hipped Consensus Dam
- #2 205 WT, Milk
- #4 Pelvic, Scrotal, & Feed Test
- Should be a cow builder

Lot 12 PAY RAISE

AAR TEN X 7800 SA
FEAR TEN X THUNDER 613
FEAR THUNDER 6595 930

MYTTY IN FOCUS
AAR LADY KELTON 5551
CONNEALY THUNDER
OCC 724 MISS ALL

PRODUCTION EPDs				MATERNAL EPDs			\$ VALUE			
CED	BW	WW	YW	CEM	Milk	\$M	\$W	\$B	\$C	
3	2.2	61	114	7	20	56	50	107	192	
PERFORM	ACT. BW	82	205Wt	770	PELVIC	175	SCROTAL	37.5	TEST	3.1
CARCASS	CW	39	MARB	0.16	REA	0.62	FAT	0.014		

- Nice Ten X/Thunder bred Dam
- #3 YW, #4 WW
- #3 205, Top 5 Feed Test
- High octane performance type bull



Lot 13 PAY RAISE

GAR PREDESTINED
FEAR PREDESTINED POWER 1 161
FEAR PL 841 POWER1 928

B/R NEW DESIGN 036
GAR EXT 4206
SAV NET WORTH 4200
OCC2113 MISS PL

PRODUCTION EPDs				MATERNAL EPDs			\$ VALUE		
CED	BW	WW	YW	CEM	Milk	\$M	\$W	\$B	\$C
5	2.1	56	114	10	24	57	26	129	224
PERFORM	ACT. BW	84	205Wt	765	PELVIC	182	SCROTAL	38.5	TEST 2.8
CARCASS	CW	35	MARB	0.71	REA	0.42	FAT	0.031	

- Good uddered, solid built Predestined Dam
- #3 YW, Milk, \$C
- #4 205, Pelvic, & Scrotal
- Another good performance bull



Lot 14 PAY RAISE

GDAR GAME DAY 449
FEAR GAME DAY LEAD ON 222
OCC 6101 MARIAN LO

BOYD NEW DAY 8003
GDAR MISS WIX 474
CONNEALY LEAD ON
OCC 4104 MARIAN DAG

PRODUCTION EPDs				MATERNAL EPDs			\$ VALUE		
CED	BW	WW	YW	CEM	Milk	\$M	\$W	\$B	\$C
5	1.5	57	106	9	23	58	49	95	185
PERFORM	ACT. BW	86	205Wt	725	PELVIC	175	SCROTAL	35	TEST 2.9
CARCASS	CW	25	MARB	0.28	REA	0.51	FAT	0.24	

- Easy keeping Game Day dam
- Balanced EPD profile
- Maternal type genetics



Dale doing tractor stuff

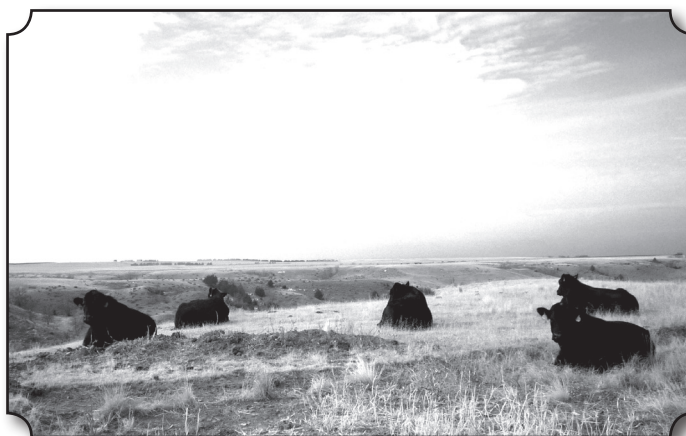
Lot 15 PAY RAISE

SAV NET WORTH 4200
FEAR NET WORTH 3104 153
OCC 3104 FROSTY NEUTRON

SAV 8180 TRAVELER 004
SAV MAY 2410
OCC NEUTRON 731
OCC 812 FROSRTY RT

PRODUCTION EPDs				MATERNAL EPDs			\$ VALUE		
CED	BW	WW	YW	CEM	Milk	\$M	\$W	\$B	\$C
5	1.5	55	102	10	25	44	52	112	190
PERFORM	ACT. BW	85	205Wt	695	PELVIC	169	SCROTAL	33	TEST 2.8
CARCASS	CW	35	MARB	0.22	REA	0.38	FAT	0.029	

- Deep bodied, solid built Net Worth Dam
- #2 Milk EPD
- Pretty good maternal pedigree



MILL BAR HICKOK 7242



MILL BAR HICKOK 7242

[AMF-CAF-D2F-DDF-MIF-NHF]

Born: 02/3/2011	#16983331	Tattoo: 251	Bull
Connealy Consensus Connealy Consensus 7229 #*16447771 Blue Lilly of Conanga 16	S A V Final Answer 0035 Mill Bar Bemindful Maid 6304 17090838 Mill Bar Lady DI 3400	KMK Alliance 6595 187 Blinda of Conanga 004 Woodhill Admiral 77K Blue Cash of Conanga 6020 Sitz Traveler 8180 S A V Emulous 8145 Bon View New Design 1407 Mill Bar Lady Di 2716	

PRODUCTION EPDs				MATERNAL EPDs				\$ VALUE			
CED	BW	WW	YW	CEM	Milk	\$EN	\$W	\$F	\$G	\$B	\$C
+12	+0.2	+66	+114	+6	+25	-25	+70	+75	+55	+131	+236
CARCASS	CW	+38	.70	MARB	+68	.67	REA	+74	.64	FAT	-.011 .67

Lot 16 HICKOK

RITO 707 OF IDEAL 3407 7075 R R RITO 707
FEAR RESOURCE ABERDEEN 625 IDEAL 3407 OF 1418 076
OCC ERICA BANDO FF SAF 598 BANDO 5157
OCC 513 ERICAS MATHMATECIAN

PRODUCTION EPDs				MATERNAL EPDs				\$ VALUE			
CED	BW	WW	YW	CEM	Milk	\$M	\$W	\$B	\$C		
7	1.4	61	109	5	22	66	58	117	236		
PERFORM	ACT. BW	79	205Wt	725	PELVIC	175	\$CROTAL	33.5	TEST	3.1	
CARCASS	CW	38		MARB	0.51		REA	0.71		FAT	0.013

- Dam is an easy keeping Resource daughter
- #3 \$M, #2 \$C
- Top 5 Feed Test
- These Hickok daughters around here look like the real deal

Lot 17 HICKOK

S CHISM 6175 PAWS UP ALLIANCE 9561
FEAR CHISM RUSS 300 PAWS UP 9048 EMULATION EXT
OCC 5211 LASS OCC RUSS OF F421
OCC 834 LASS OF HEARTLAND

PRODUCTION EPDs				MATERNAL EPDs				\$ VALUE			
CED	BW	WW	YW	CEM	Milk	\$M	\$W	\$B	\$C		
7	0.9	55	103	8	22	66	64	120	221		
PERFORM	ACT. BW	80	205Wt	740	PELVIC	189	\$CROTAL	39	TEST	3.4	
CARCASS	CW	36		MARB	0.46		REA	0.53		FAT	0.029

- This Chisum cow might be the best one on the place
- #3 \$M, \$W, Pelvic, & Scrotal
- #2 Feed Test
- Should leave you a very nice set of heifers



TRUCKING

If you buy 3 or more bulls I will bring them back home and keep them free of charge until June 10th or your turn out date if you so desire.

If you buy less than 3 bulls I will bring them back home at a cost of \$1.50 per head per day until June 10th or your turn out day.

Please consider taking the bulls home on saleday. There are 20 miles of mud/gravel roads between my place and the hi-way. It's not easy traveling in the springtime, besides they've been here for two years and they don't like me anymore.

Lot 18 HICKOK

SAV NET WORTH 4200
FEAR NET WORTH 3104 149
 OCC 3104 FROSTY NEUTRON

SAV 8180 TRAVELER 004
 SAV MAY 2410
 OCC NEUTRON 731
 OCC 812 FROSRTY RT

PRODUCTION EPDs				MATERNAL EPDs			\$ VALUE			
CED	BW	WW	YW	CEM	Milk	\$M	\$W	\$B	\$C	
8	0.8	57	99	7	28	55	62	121	212	
PERFORM	ACT. BW	77	205Wt	740	PELVIC	178	SCROTAL	35	TEST	3.3
CARCASS	CW	34	MARB	0.51	REA	0.55	FAT	0.025		

- Solid, square built Net Worth Dam
- #1 Milk, #3 CED
- Top 5 \$B & Pelvic
- Well balanced bull right here

Lot 19 HICKOK

SAV FINAL ANSWER 0035
FEAR FINAL ANSWER ABERDEEN 302
 FEAR ABERDEEN BANDO 1

GDAR TRAVELER 71
 SITZ EVERERERALDA INTENSE 1137
 TC ABERDEEN 759
 OCC 203 ERICA BANDO

PRODUCTION EPDs				MATERNAL EPDs			\$ VALUE			
CED	BW	WW	YW	CEM	Milk	\$M	\$W	\$B	\$C	
12	0.3	59	103	8	25	62	68	125	223	
PERFORM	ACT. BW	75	205Wt	725	PELVIC	175	SCROTAL	38.5	TEST	3
CARCASS	CW	32	MARB	0.62	REA	0.61	FAT	0.027		

- Final Answer/Aberdeen bred Dam
- #1 CED, #2 Milk
- #4 BW & Act. BW
- Should make a heifer bull

Lot 20 HICKOK

S CHISM 6175
FEAR CHISM 878 522
 OCC 555 BLACKCAP 878

PAWS UP ALLIANCE 9561
 PAWS UP 9048 EMULATION EXT
 BON VIEW NEW DESIGN 878
 OCC 17 BLACKCAP 1418

PRODUCTION EPDs				MATERNAL EPDs			\$ VALUE			
CED	BW	WW	YW	CEM	Milk	\$M	\$W	\$B	\$C	
6	1.5	63	105	7	22	66	68	109	211	
PERFORM	ACT. BW	79	205Wt	700	PELVIC	169	SCROTAL	35.5	TEST	3
CARCASS	CW	46	MARB	0.59	REA	0.56	FAT	0.014		

- This Chisum bred dam is awfully good
- #2 \$W, #3 \$W
- This guy and Lot 17 would make a helluva team of cow builders

Lot 21 HICKOK

CONNEALLY LEAD ON
FEAR LEAD ON 093 910
 OCC 093 PRIDE OF FRONTLINE

CONNEALLY LEADTIME
 ELIGENCE PLUS OF CONANGA
 CONNEALLY FRONTLINE
 WINDAC PRIDE H253

PRODUCTION EPDs				MATERNAL EPDs			\$ VALUE			
CED	BW	WW	YW	CEM	Milk	\$M	\$W	\$B	\$C	
7	1.9	54	98	6	25	55	52	120	211	
PERFORM	ACT. BW	84	205Wt	685	PELVIC	189	SCROTAL	35	TEST	2.9
CARCASS	CW	30	MARB	0.54	REA	0.56	FAT	0.002		

- Really nice Lead On Dam
- #2 Milk EPD
- #4 Pelvic



S CHISUM 255

S CHISUM 255

[AMF-CAF-D2F-DDF-MIF-NHF-OHF-OSF-RDF]

Born: 03/15/2012

#17298481

Tattoo: 255

Bull

S Alliance 3313
S Chisum 6175 15511451
S Gloria 464

Paws Up Alliance 9561
Paws Up 9048 Emulation Ext
S Eclipse 169
S Gloria 209
H A Image Maker 0415
Apex Eriskay 5506
R&S Expedition 1404
S Blossom 4190

Shipwheel Chinook
S Blossom 0278 16661905
S Blossom 8378

PRODUCTION EPDs				MATERNAL EPDs			\$ VALUE					
CED	BW	WW	YW	CEM	Milk	\$EN	\$W	\$F	\$G	\$B	\$C	
+13	-0.3	+57	+89	+14	+18	+8	+60	+70	+31	+100	+204	
CARCASS	CW	+32	.53	MARB	+0.21	.47	REA	+64	.48	FAT	+0.32	.47



Lot 22 CHISUM

SAV FINAL ANSWER 0035
FEAR FINAL ANSWER 878 130
OCC 1121 TREND

GDAR TRAVELER 71
SITZ EVERERALDA INTENSE 1137
BON VIEW NEW DESIGN 878
MISS ERIKA FK 6164

PRODUCTION EPDs				MATERNAL EPDs			\$ VALUE					
CED	BW	WW	YW	CEM	Milk	\$M	\$W	\$B	\$C			
8	0.4	52	89	11	20	66	54	108	201			
PERFORM	ACT. BW	74	205Wt	715	PELVIC	178	SCROTAL	38.5	TEST	3.3		
CARCASS	CW	29		MARB	0.34		REA	0.44	FAT	0.044		

- Excellent Final Answer Dam
- #3 CED & Act. BW
- Top 5 for Pelvic, Scrotal, and Feed Test
- Heifer Bull

Lot 23 CHISUM

SAV FINAL ANSWER 0035
FEAR FINAL ANSWER ABERDEEN 330
FEAR ABERDEEN 6595

GDAR TRAVELER 71
SITZ EVERERALDA INTENSE 1137
TC ABERDEEN 759
498 ENZORA DAG

PRODUCTION EPDs				MATERNAL EPDs			\$ VALUE					
CED	BW	WW	YW	CEM	Milk	\$M	\$W	\$B	\$C			
12	-0.4	55	92	12	22	66	63	116	214			
PERFORM	ACT. BW	72	205Wt	700	PELVIC	175	SCROTAL	32	TEST	3.1		
CARCASS	CW	31		MARB	0.45		REA	0.68	FAT	0.032		

- Good uddered Final Answer Dam
- #1 CED and BW
- 2nd lightest Act. BW
- Heifer Bull

Lot 24 CHISUM

SAV FINAL ANSWER 0035
FEAR FINAL ANSWER NET WORTH 306
FEAR 146 NETWORTH FOCUS

GDAR TRAVELER 71
SITZ EVERERALDA INTENSE 1137
SAV NET WORTH 4200
OCC 213 MADAM FOCUS

PRODUCTION EPDs				MATERNAL EPDs			\$ VALUE					
CED	BW	WW	YW	CEM	Milk	\$M	\$W	\$B	\$C			
12	0.3	57	94	14	20	69	64	101	200			
PERFORM	ACT. BW	72	205Wt	705	PELVIC	178	SCROTAL	40	TEST	3		
CARCASS	CW	27		MARB	0.32		REA	0.44	FAT	0.043		

- Final Answer bred Dam
- #1 CED & #4 BW
- #2WW, \$M
- 2nd lightest Act. BW

Lot 25 CHISUM

SAV FINAL ANSWER 0035
FEAR FINAL ANSWER RUSS 310
OCC 5211 LASS

GDAR TRAVELER 71
SITZ EVERERALDA INTENSE 1137
OCC RUSS OF F421
OCC 834 LASS OF HEARTLAND

PRODUCTION EPDs				MATERNAL EPDs			\$ VALUE					
CED	BW	WW	YW	CEM	Milk	\$M	\$W	\$B	\$C			
10	-0.2	54	92	12	19	67	56	100	190			
PERFORM	ACT. BW	70	205Wt	685	PELVIC	182	SCROTAL	38.5	TEST	3.1		
CARCASS	CW	26		MARB	0.28		REA	0.43	FAT	0.036		

- Final Answer Dam
- #2 CED, BW, & Act. BW
- Top 5 Pelvic, Scrotal, & Feed Test
- Heifer Bull

Lot 26 CHISUM

GDAR GAME DAY 449
FEAR GAMEDAY NEUTRON 138
OCC 275 FROSTY N

BOYD NEW DAY 8003
GDAR MISS WIX 474
OCC NEUTRON 731
OCC 044 FROSTY OF JMX

PRODUCTION EPDs				MATERNAL EPDs			\$ VALUE			
CED	BW	WW	YW	CEM	Milk	\$M	\$W	\$B	\$C	
10	0	52	91	11	23	72	55	100	201	
PERFORM	ACT. BW	70	205Wt	675	PELVIC	175	SCROTAL	34.5	TEST	2.8
CARCASS	CW	30	MARB	0.13	REA	0.51	FAT	0.033		

- Out of an easy fleshing Game Day Dam
- #2 CED, #3 BW, #1 \$M
- Lowest Act. BW in the sale
- Heifer Bull



Thank Yous:

Aryan Brown,
Amanda Edwards,
Dale Edwards,
Seth Schoon,
Rudy Edwards,
Matt & Lorena Hight,
Marty Michalek,



Keith Perli,
Raina Perli,
Quin Seymour,
Mike Weldron,
Tanner Willert,
All the Branding
Crew.

Flying E Ranch
25331 Yellow Eagle Rd
White River, SD 57579

FLYING E *Angus Ranch* BULL SALE



Friday 1:00 PM CST
MARCH 12th
2021

Winner Livestock Auction • Winner, SD
www.flyingeangusranch.com